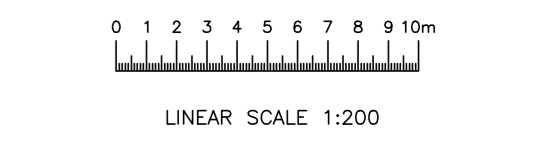
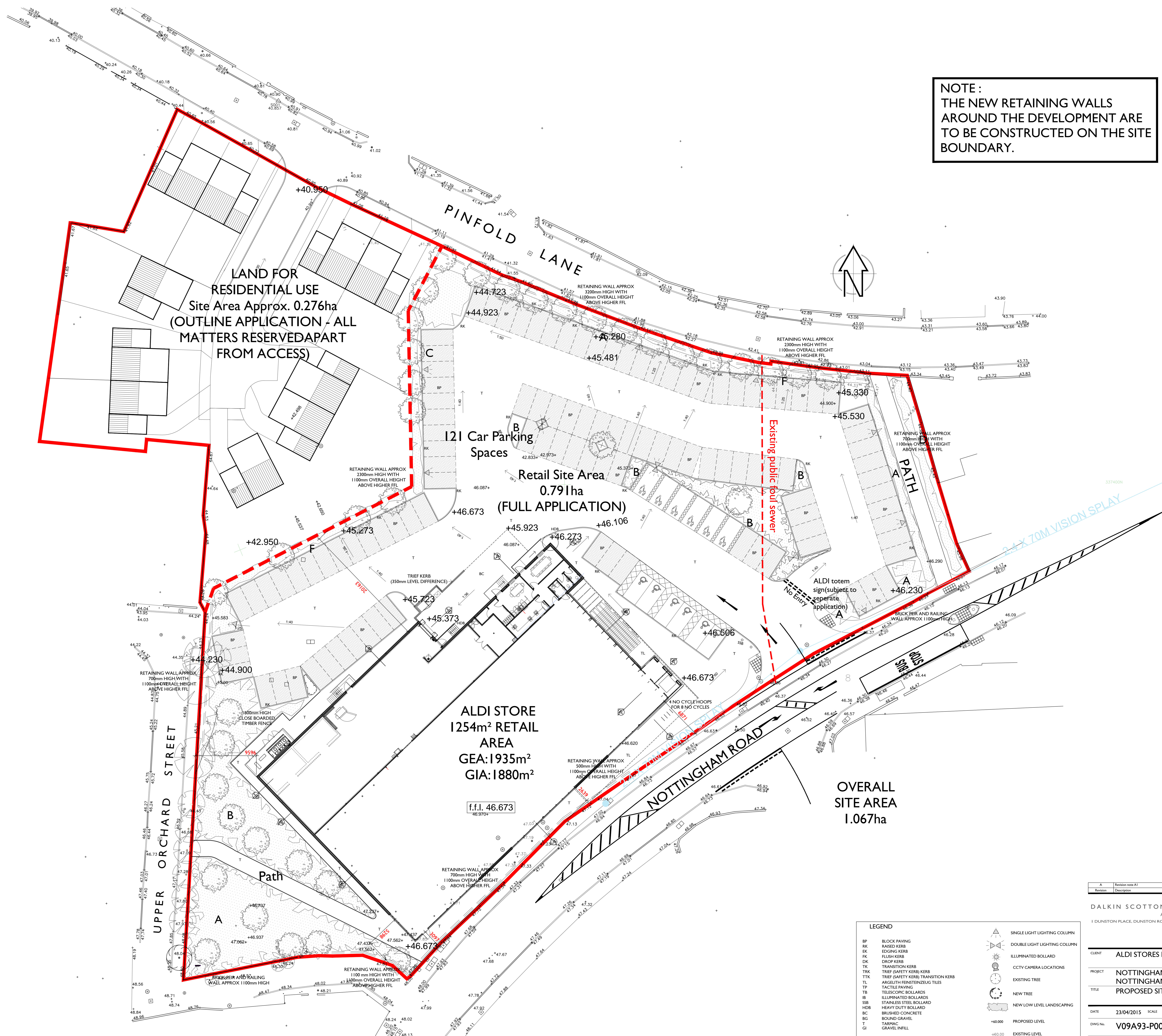


NOTE:
THE NEW RETAINING WALLS
AROUND THE DEVELOPMENT ARE
TO BE CONSTRUCTED ON THE SITE
BOUNDARY.



Dalkin Scotton Partnership
Architects Limited
PLANNING ISSUE

**OVERALL
SITE AREA
1.067ha**

LEGEND

BP	BLOCK PAVING	▲	SINGLE LIGHT LIGHTING COLUMN
RK	RAISED KERB	●	DOUBLE LIGHT LIGHTING COLUMN
EK	EDGING KERB	○	ILLUMINATED BOLLARD
FK	FLUSH KERB	○	CCTV CAMERA LOCATIONS
DK	DROP KERB	○	EXISTING TREE
TK	TRANSITION KERB	○	NEW TREE
TRK	TRIEF (SAFETY KERB) KERB	○	NEW LOW LEVEL LANDSCAPING
TTK	TRIEF (SAFETY KERB) TRANSITION KERB	○	
TL	ARGELUTH FEINSTEINZEUG TILES	○	
TP	TACTILE PAVING	○	
TB	TELESCOPIC BOLLARDS	○	
IB	ILLUMINATED BOLLARDS	○	
SSB	STAINLESS STEEL BOLLARD	○	
HOB	HEAVY DUTY BOLLARD	○	
BC	BRUSHED CONCRETE	○	
BG	BOUND GRAVEL	○	
T	TARMAC	○	
GI	GRAVEL INFILL	○	

Revision	Revision no/A1	Description	Date	Drawn	Checked

DALKIN SCOTTON PARTNERSHIP
ARCHITECTS LIMITED
1 DUNSTON PLACE, DUNSTON ROAD, CHESTERFIELD S41 8NL
TEL: 01246 389 860
FAX: 0121 747 1944
www.dsparchitects.com

CLIENT ALDI STORES LIMITED

PROJECT NOTTINGHAM ROAD, STAPLEFORD
NOTTINGHAM

TITLE PROPOSED SITE BLOCK PLAN

DATE 23/04/2015 **SCALE** 1:200 @ A0 **DRAWN** MDB **CHECKED** DCM

DWG NO. V09A93-P007 **REVISION** - **NORTH**