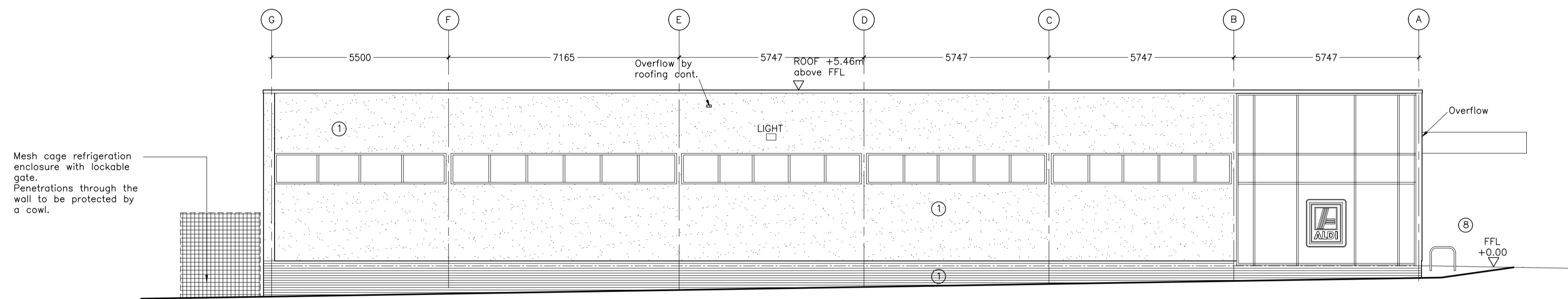


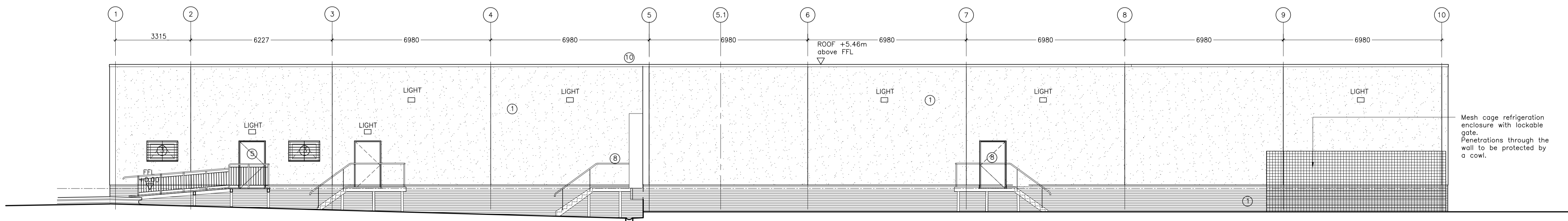
SOUTH-EAST ELEVATION TO NOTTINGHAM ROAD

EXTERNAL FINISHES

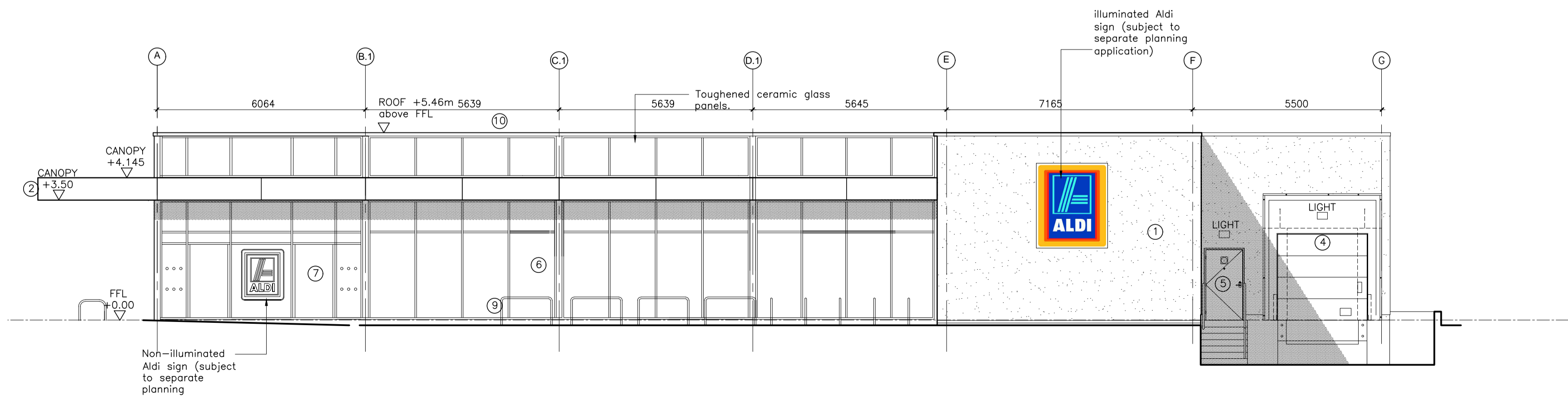
- 1 Walls – Sand cement render painted white RAL 9010 (White) with Blockleys brick ltd. 'Charcoal' with Tarmac Y14 (black) coloured mortar brickwork below rendered panels.
- 1A External wall insulation system and silicone 'K' 1.5mm textured finish, Colour: RAL 9010(White).
- 1B Brickwork panel Blockleys brick ltd. 'Charcoal' with Tarmac Y14 (black) coloured mortar
- 2 Canopy fascia – powder coated aluminium sheeting, colour Anthracite Grey (RAL 7016). (joints to match half grid spacing on entrance elevation and shopfront elevations).
- 3 Windows – polyester powder coated aluminium (RAL 7016).
- 4 Sectional Overhead Door – PVF coated steel (RAL 7016).
- 5 Steel Escape Doors – Polyester Powder coated colour Grey (RAL 7016) (Frame colour RAL 7016).
- 6 Shopfronts – Polyester powder coated aluminium (RAL 7016).
- 7 Entrance – Polyester powder coated aluminium (RAL 7016).
- 8 Handrails – Galvanised tubular steel.
- 9 Trolley Bay rails – Satin finish stainless steel.
- 10 0.7mm thick membrane coated drip flashing. Colour RAL 7016 (Anthracite).



SOUTH-WEST ELEVATION TO UPPER ORCHARD STREET

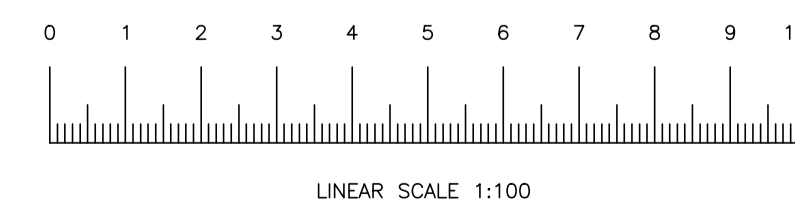


NORTH-WEST ELEVATION (warehouse and loading bay area)



NORTH-EAST ELEVATION (to car park)

Dalkin Scotton Partnership
Architects Limited
PLANNING ISSUE



Revision	Description	Date	Drawn	Checked

DALKIN SCOTTON PARTNERSHIP
ARCHITECTS LIMITED
1 DUNSTON PLACE, DUNSTON ROAD, CHESTERFIELD S41 8NL
TEL - 01246 389 860
FAX - 0121 747 1944
www.dsparchitects.com

CLIENT	ALDI STORES LIMITED						
PROJECT	NOTTINGHAM ROAD, STAPLEFORD NOTTINGHAM						
TITLE	PROPOSED ELEVATIONS						
DATE	22-01-15	SCALE	1:100 @ A1	DRAWN	JDH	CHECKED	DCM
DWG No.	V09A93 - P201		REVISION	NORTH			

ALL RIGHTS RESERVED. THIS DRAWING IS THE PROPERTY OF DALKIN SCOTTON PARTNERSHIP. IT IS TO BE USED ONLY FOR THE PROJECT AND SITE SPECIFICALLY IDENTIFIED. ANY REUSE OR MODIFICATION OF THIS DRAWING WITHOUT THE WRITTEN CONSENT OF DALKIN SCOTTON PARTNERSHIP IS STRICTLY PROHIBITED.