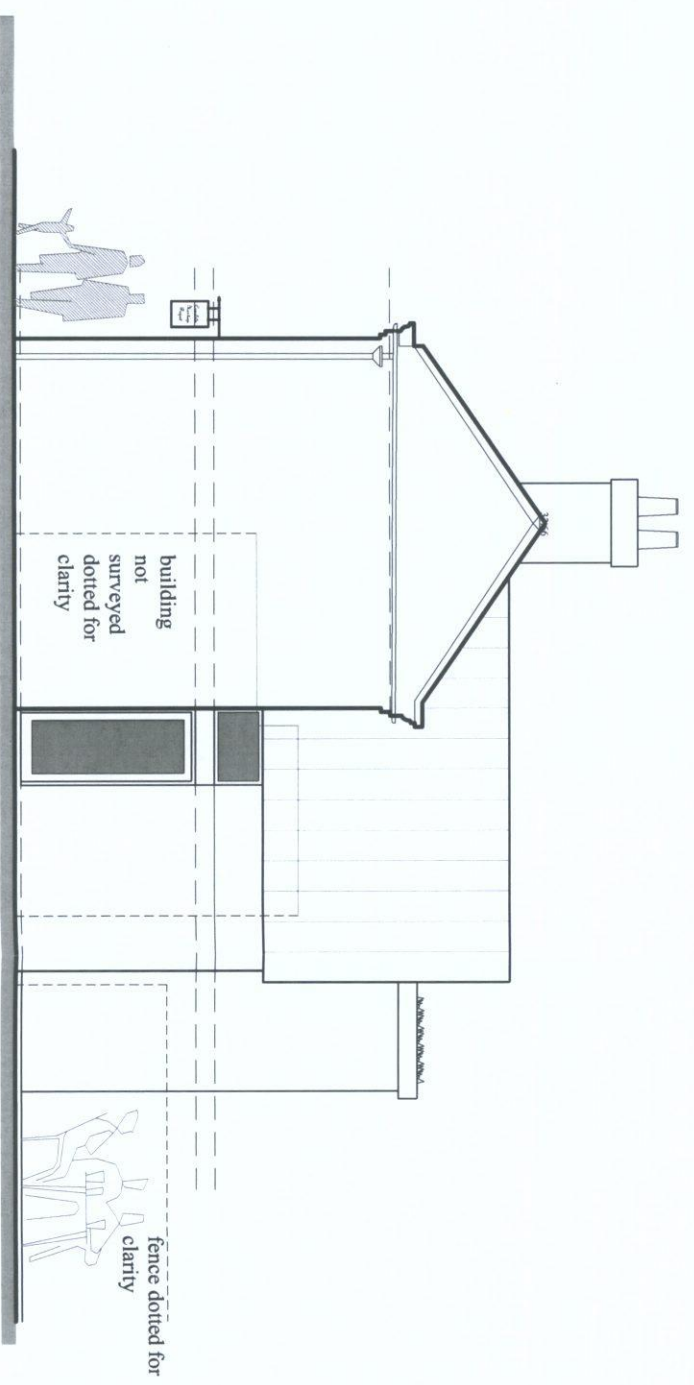


Timber double gates with strap hinges, for access to rear

Timber bifold doors, with cycle hire/fishing tackle frontage behind.

### North East Elevation



### North West Elevation

Rev E	04/02/2013	
Rev D	20/07/2012	
Rev C	11/06/2012	
Rev B	29/02/2012	
Rev A	14/12/2011	

Revision following pre-application discussions.  
 Revision following comments from British Waterways 8/06/2012  
 Revision following comments from British Waterways 8/06/2012  
 Revision following meeting with British Waterways 28/02/2012  
 Two doors added where porch removed, and stable doors amended following meeting with Jason Morden and David Littlewood.

JULIAN OWEN ASSOCIATES  
**ARCHITECTS**

276 Queens Road  
 Bepton, Nottingham  
 NG9 2BD  
 T 0115 922 9831  
 F 0115 922 4616  
 E enquiries@julianowen.co.uk  
 www.julianowen.co.uk

**Job:** Canalside Heritage Centre  
**Title:** Proposed Elevations 1  
**Date:** March 11 **Scale:** 1:100  
**Drawing Size:** A3  
**Drawing No:** 1639/09E

All Dimensions are Approximate  
 Do Not Scale Directly from the Drawing  
 All Dimensions to be Checked and Confirmed on Site  
 Read in Conjunction with the Specification

