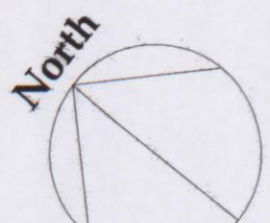
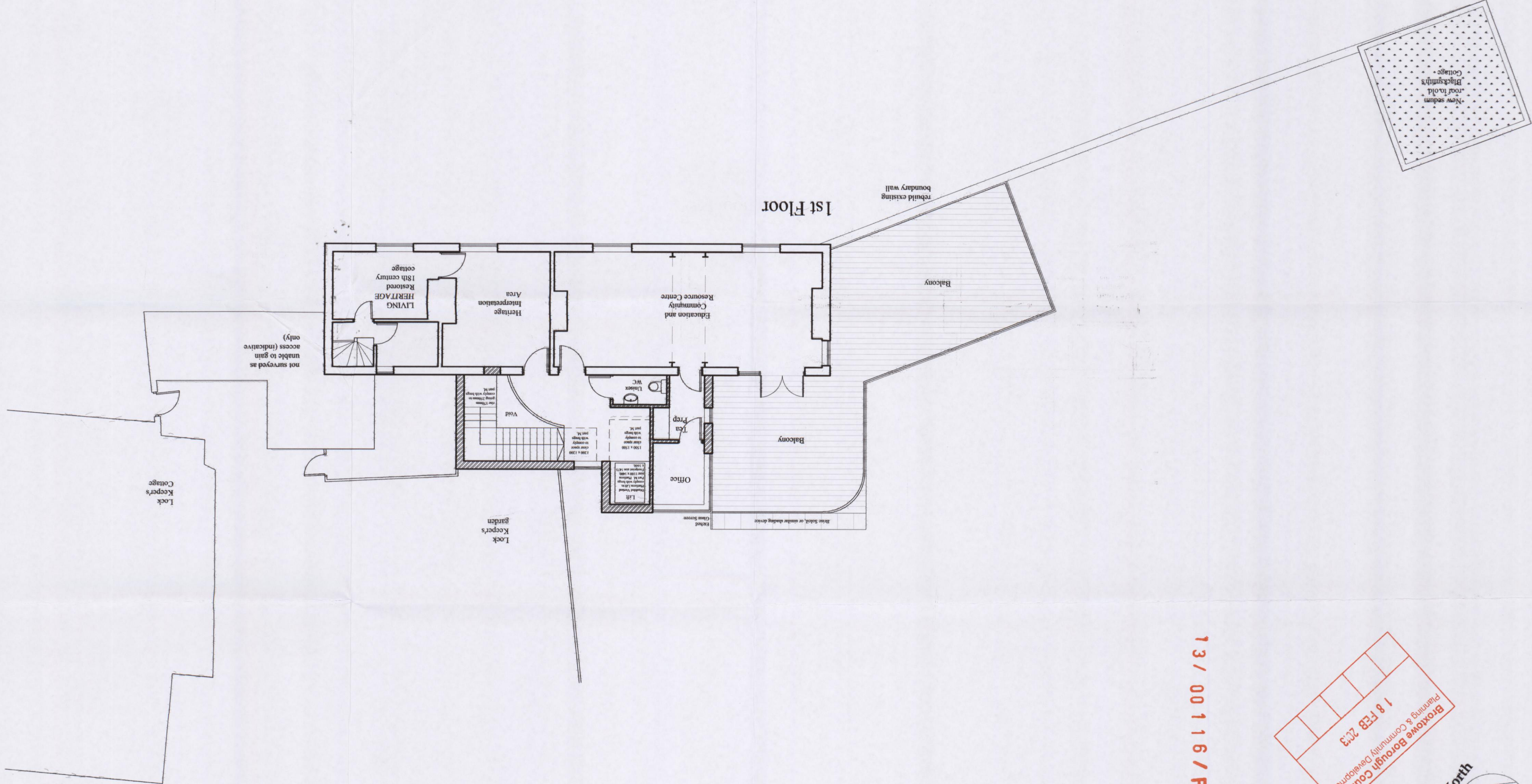


**JULIAN OWEN ASSOCIATES ARCHITECTS**  
 276 Queens Road  
 Broom, Nottingham  
 NG9 2BD  
 T 0115 922 8831  
 F 0115 922 6616  
 E enquiries@julianowen.co.uk  
 www.julianowen.co.uk

**Job:** Canal-side Heritage Centre  
**Title:** Proposed First Floor Plan  
**Date:** March 11  
**Scale:** 1:100  
**Drawing Size:** A2  
**Drawing No:** 1639/07E

All Dimensions are Approximate  
 Do Not Scale Directly From the Drawing  
 Read in conjunction with the specification

- Rev E 04/02/2013 Bi-fold doors replaced with double doors.
- Rev D 31/10/2012 Minor internal amendments, paper size enlarged to include Blacksmith's cottage
- Rev C 22/10/2012 Revised following meeting with UDT 09/10/2012
- Rev B 29/02/2012 Revision following meeting with British Waterways 28/02/2012
- Rev A 23/11/2011 Stairs, lift, WC area amended inline with Part M



**Broxtowe Borough Council**  
 Planning & Community Development  
**18 FEB 2013**

13 / 00 116 / FULL