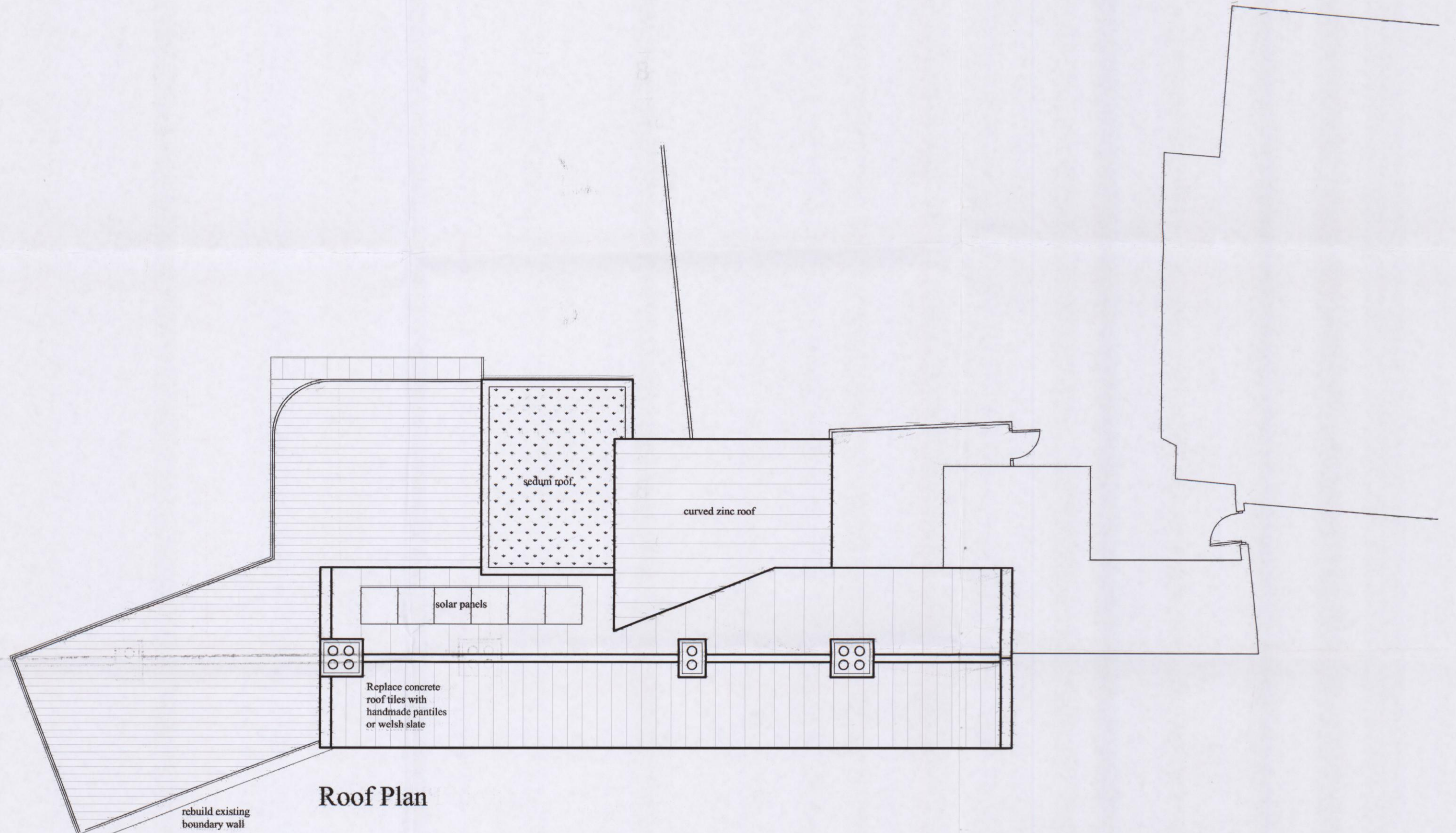
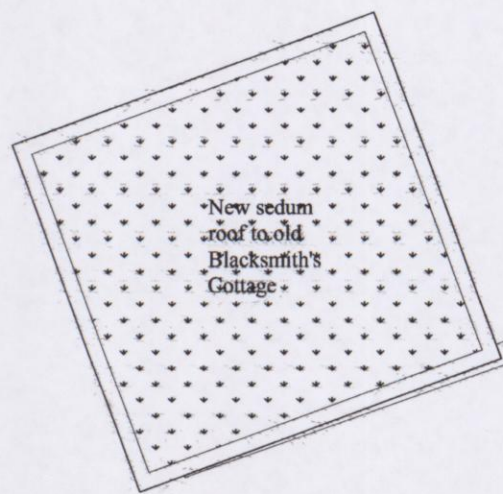


**Broxtowe Borough Council**  
 Planning & Community Development  
**18 FEB 2013**

13/00116/FUL



**Roof Plan**



- Rev D 31/10/2012 Paper size increased to show Blacksmith's Cottage
- Rev C 11/06/2012 Revision following comments from British Waterways 8/06/2012
- Rev B 29/02/2012 Revision following meeting with British Waterways 28/02/2012
- Rev A 23/11/2011 Roof plan amended inline with plans

**JULIAN OWEN ASSOCIATES ARCHITECTS**  
 276 Queens Road  
 Beeston, Nottingham  
 NG9 2BD  
 t 0115 922 9831  
 f 0115 922 4616  
 e enquiries@julianowen.co.uk  
 www.julianowen.co.uk

All Dimensions are Approximate  
 Do Not Scale Directly From the Drawing  
 All Dimensions to be Checked and Confirmed on Site  
 Read In Conjunction with the Specification

**Job:** Canalside Heritage Centre  
**Title:** Proposed Roof Plan  
**Date:** March 11 **Scale:** 1:100  
**Drawing Size:** A2  
**Drawing No:** 1639/08D

