

General Notes

Do not scale off this drawing for construction purposes
All dimensions and heights to be confirmed on site prior to commencement

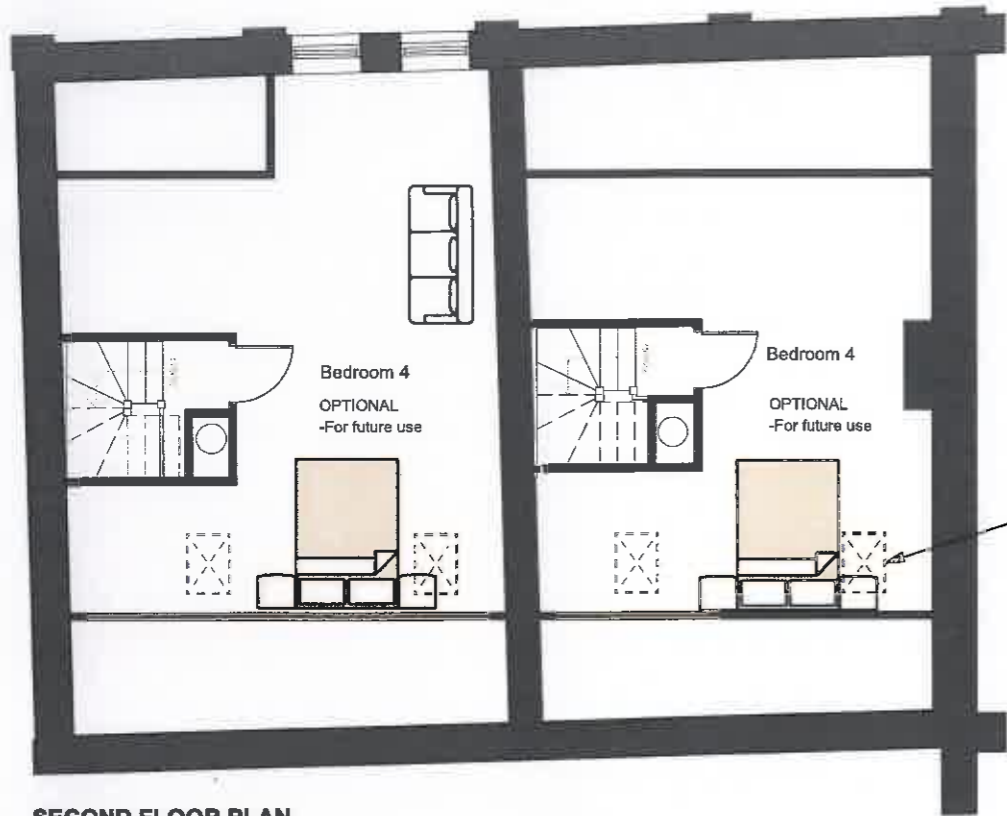


Velux conservation approved roof lights

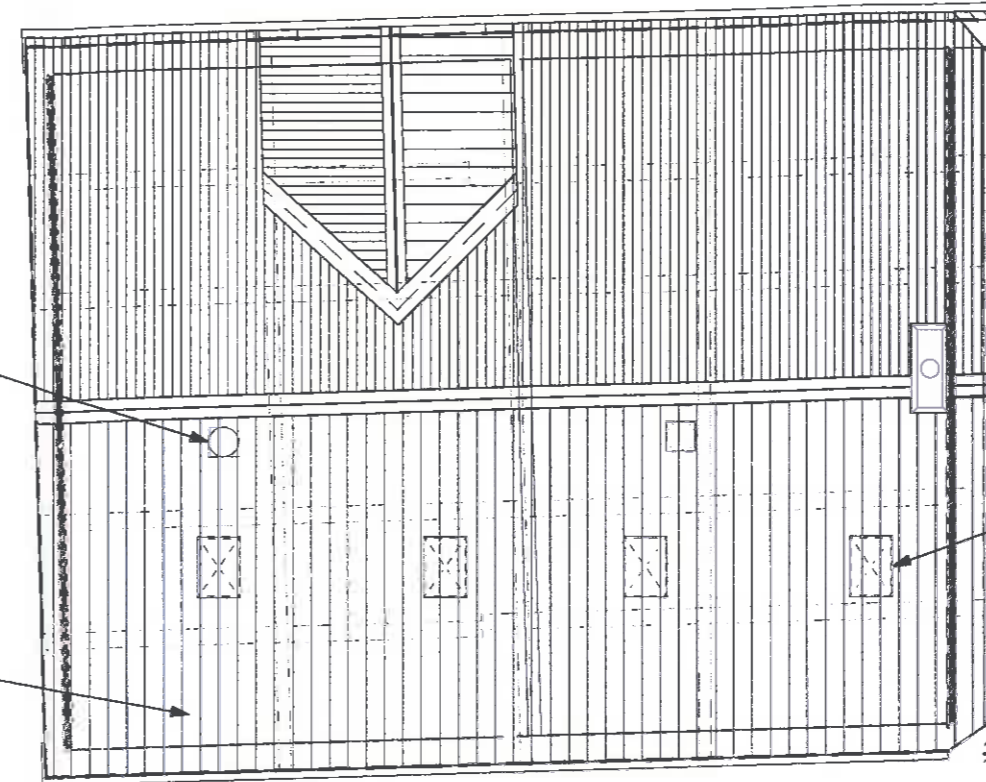
Insert new roof lights to provide natural light and ventilation to third floor. Velux conservation approved.



Velux conservation approved sun tube



SECOND FLOOR PLAN



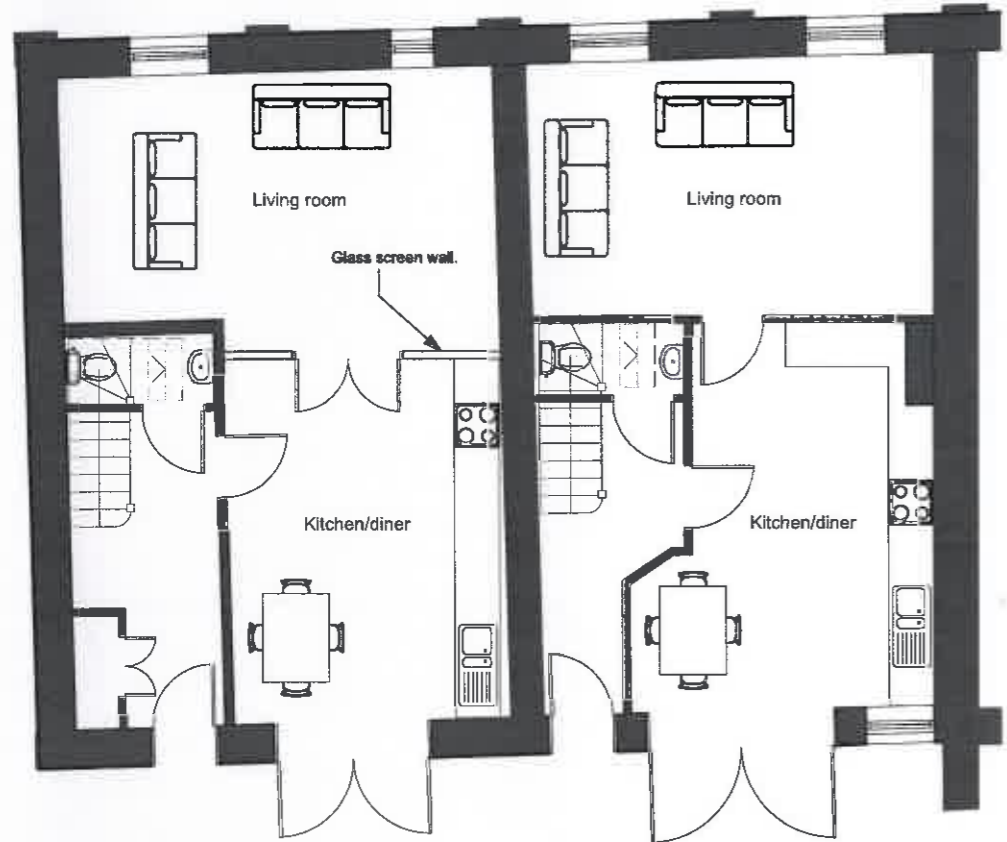
ROOF PLAN

Insert new sun tube to provide natural light to landing.

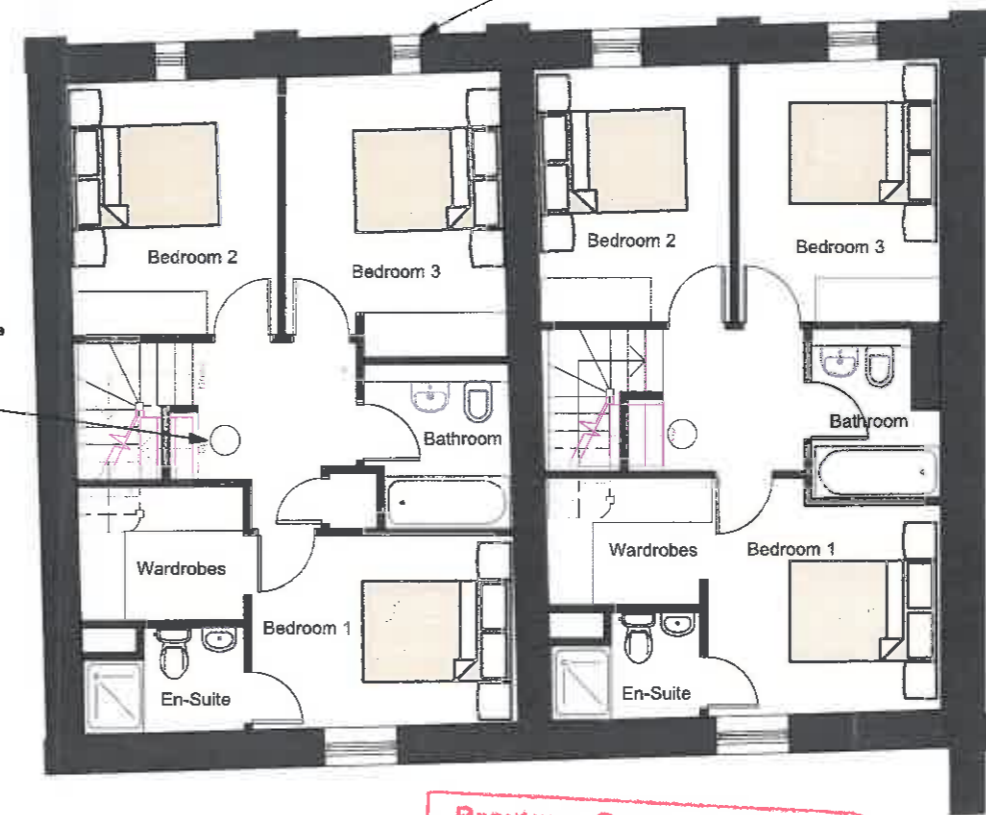
Insert new roof lights to provide natural light and ventilation to third floor.

Re-use/ Replace slate tiles where necessary.

New double glazed timber openings, nom. 685 to match existing coursing.



GROUND FLOOR PLAN



FIRST FLOOR PLAN

Insert new sun tube to provide natural light to landing.

PLANNING

0: 22-09-17 First Issue
Revisions



GALTEE HOUSE
1 HEANOR ROAD ILKESTON DERBYSHIRE DE7 8DY
T: 0115 944 8730 F: 0115 9448701 WWW: fairgrove.co.uk

Project
KIMBERLEY BREWERY REDEVELOPMENT
HARDY STREET, KIMBERLEY KILN STORE

Drawing title
KILN STORE - PROPOSED PLANS

Prepared by	For Construction	As Built	
Checked by	Quality (Site/Insp)	Contract Issue	
© The contents of this drawing may not be reproduced in whole or in part without the written permission of Fairgrove Homes Limited			
Scale	Date	Drawn by	Checked by
1:100@A3	SEPT 17	CS	

Job No.	Dwg. No.	Rev.
058	PL/KS/103	A

©copyright

BROXTOWE BOROUGH COUNCIL
AMENDED DRAWING
PLANNING AND COMMUNITY DEVELOPMENT

Broxtowe Borough Council
Planning & Community Development
16 JAN 2018

KILN STORE PROPOSED PLANS